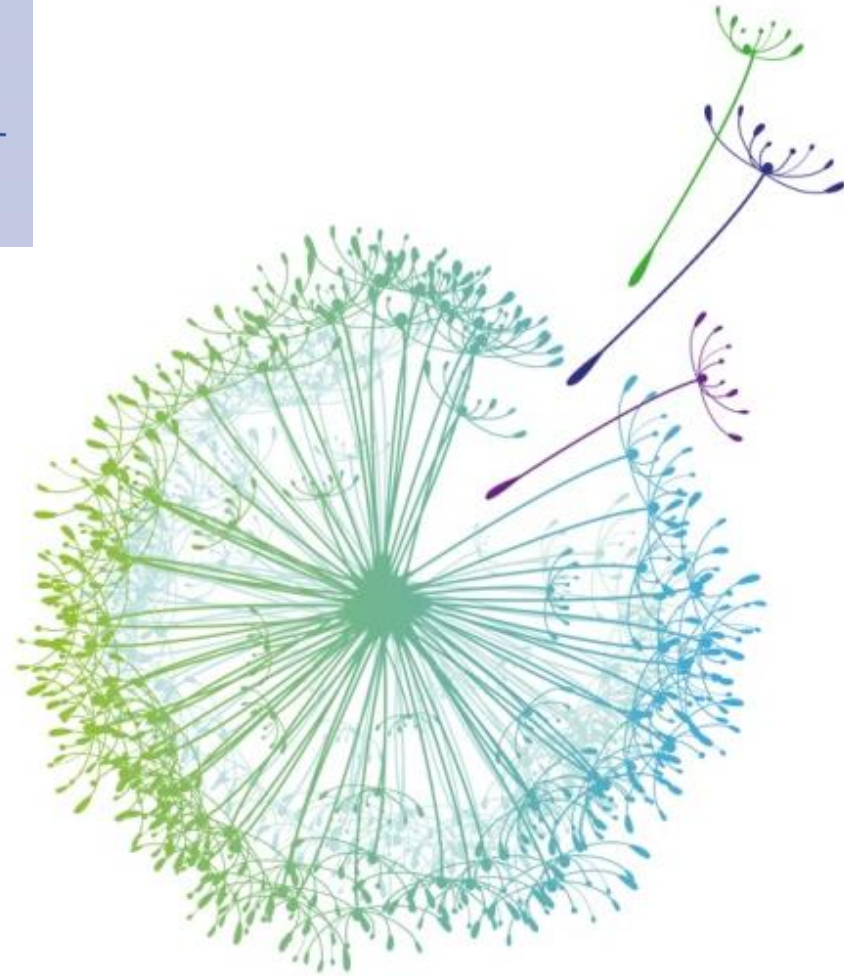




Measuring
Sustainable
Tourism

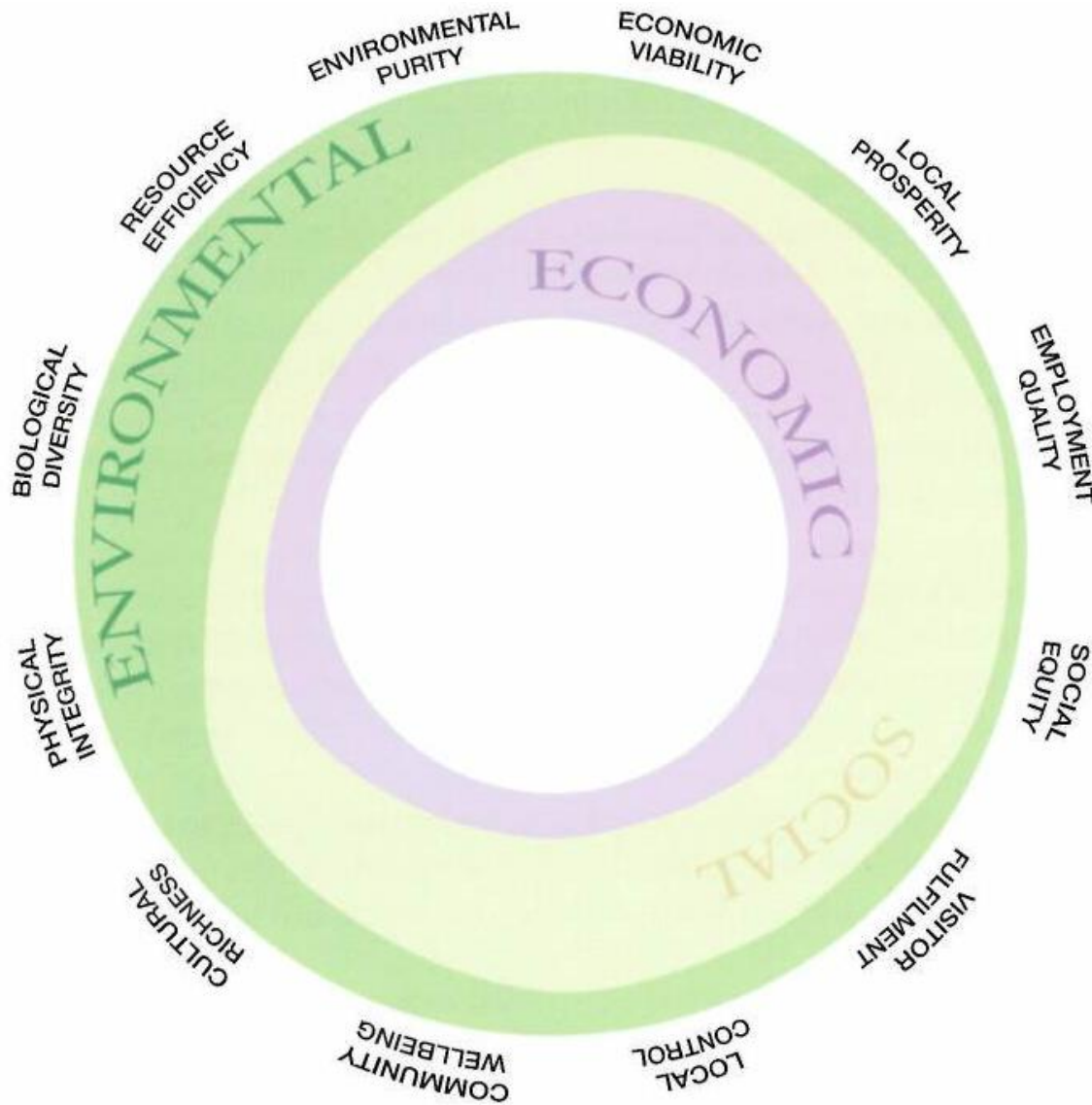
Towards a Statistical Framework



2017
**INTERNATIONAL YEAR
OF SUSTAINABLE TOURISM
FOR DEVELOPMENT**

<https://www.youtube.com/watch?v=Kl6zLywlrss>

Sustainable tourism

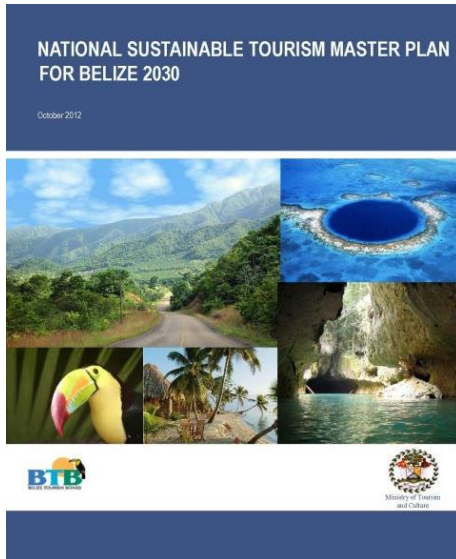


“Tourism that takes full account of its current and future economic, social and environmental impacts, addressing the needs of visitors, the industries, the environment and host communities”

“[...] is a continuous process and requires constant monitoring of impacts”

1 billion international tourists in 2016

- 2 Main drivers:



- Need **evidence** to support policy and track progress

Towards a Statistical Framework for Measuring Sustainable Tourism (MST) - 1

- Integrate **economic, environmental** and **social/cultural dimensions** across relevant spatial levels (global, national, sub-national)
- Building on established standards: **TSA and SEEA**
- Common language and organizing structure to exploit the richness of **data already available** and identify **data gaps**
- Support credibility, comparability and outreach of data and monitoring programmes, including SDG monitoring.
- **Engagement** to ensure relevance and feasibility
 - Working Group of Experts on MST
 - UNWTO Statistics & TSA Committee
 - UN Committee of Experts on Environmental-Economic Accounting
 - UN Statistical Commission
- **Research agenda**
 - 7 priority areas

Towards a Statistical Framework for Measuring Sustainable Tourism (MST) - 2



**Engage,
Research
& Discuss**



**Pilot
studies**



**Statistical
standard**



**Capacity
building**



**Int'l
Database**



Analysis



**Policy &
decision-
making**

Linking TSA and SEEA as first step towards framework

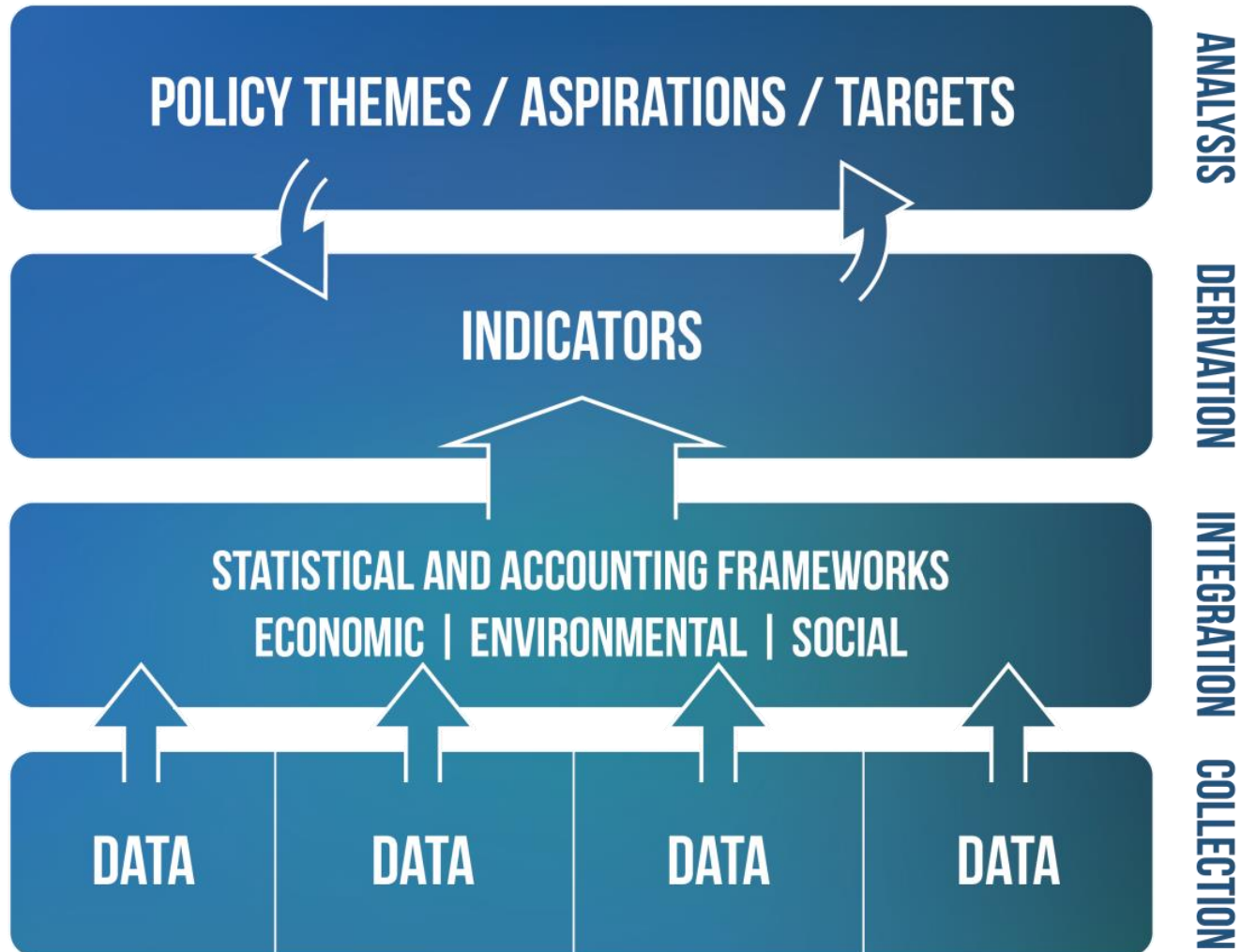
- Inbound, domestic, outbound tourism consumption
- Production by tourism industries
- Direct tourism GVA, GDP
- Employment in tourism industries



- Physical flows: water, energy, emissions, waste
- Stock (depletion) of resources: water, land, fish, timber
- Expenditures on the environment
- Ecosystems condition & services (ie spatially-based data accounts)

- Environmental impacts of tourism: GHG emissions, solid waste, wastewater, disruption of ecosystems and biodiversity
- Dependency of tourism on the environment: healthy and good quality ecosystems (beaches, reefs, forrests), water and energy requirements to meet visitor consumption
- Environmental protection expenditure, environmental taxes
- Some socio-economic impacts and dependencies of tourism: employment,...

Role of a Statistical Framework





organizing structure for exploiting the richness
of **data already available** and for identifying
additional **data** that may be needed

THANK YOU

<https://www.youtube.com/watch?v=Kl6zLywlrss>